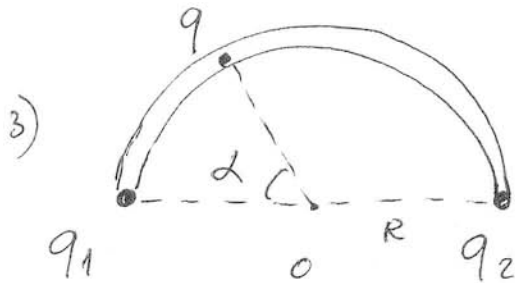
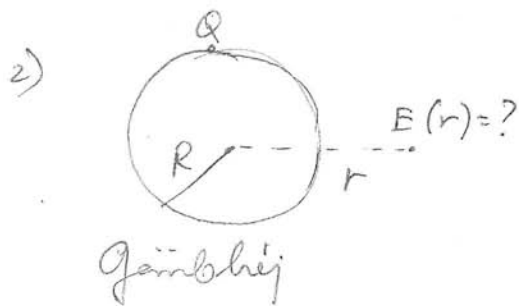
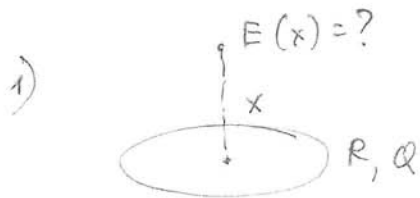


2010/02/22

1. Zkr



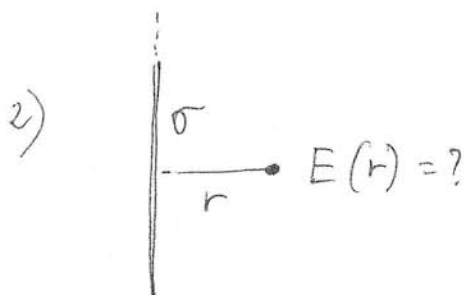
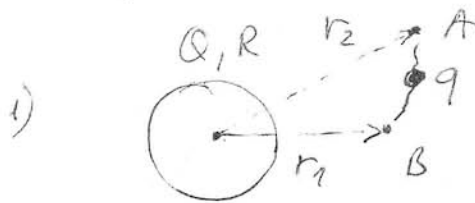
$q_1 = 1 \cdot 10^{-8} \text{ Cb}$; $q_2 = 2 \cdot 10^{-8} \text{ Cb}$
 $q = 0.5 \cdot 10^{-8} \text{ Cb}$. Egyszerűségi helyszelben
 $\alpha = ?$

2010/03/08

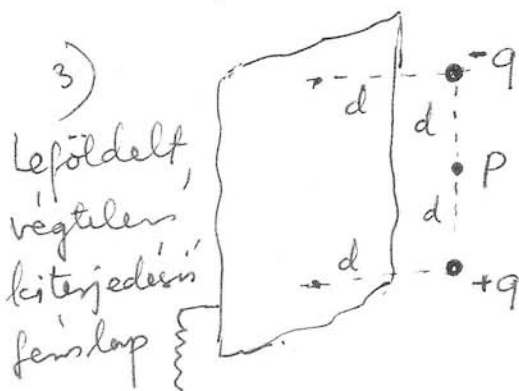
2. Zkr

A-ból B-ke

$W = ?$



Gauss-tétel segítségével
 számítanék ki az $E(r)$ -t!



Mekkora a térerősségvektor
 a P pontban?